

\$489,999 - 15234 59b Street, Edmonton

MLS® #E4463215

\$489,999

5 Bedroom, 3.50 Bathroom, 1,876 sqft
Single Family on 0.00 Acres

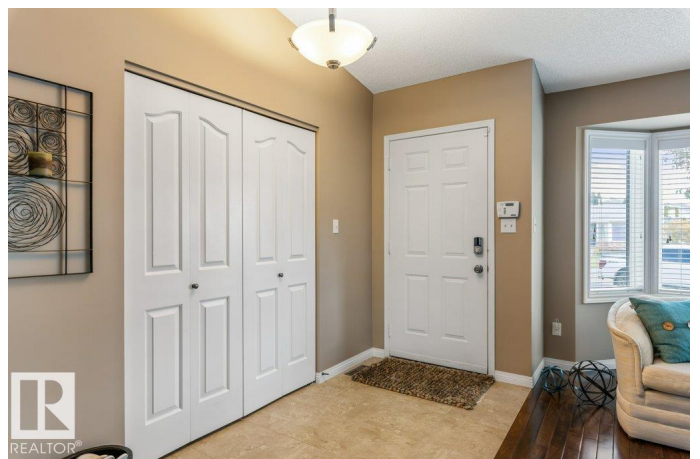
McLeod, Edmonton, AB

METICULOUSLY maintained family home, proudly owned by the original owners & perfectly located on quiet street in the desirable community of McLeod. Just under 3000sf of living space, this bright & inviting 5-bdrm, 3.5-bath home offers a wonderful layout. Upgraded hardwood floors, Wrought Iron railing, & more. Step out to the new composite deck & enjoy the beautiful private backyard from the kitchen. Or cozy up in the family room with a gas FP, down the hall to the den/bedroom, & 2pc bath with easy access to the attached dbl garage. Upstairs is an oversized primary bdrm with walk-in closet, a 3-piece ensuite, 2 more generously sized bdrms, & a 4-piece bath, completes the second floor. The FF basement is built to entertain, featuring B/I speakers, gas FP, extra bdrm, large 4-piece bath with a jet tub, & tons of storage space. Central A/C. UPDATES include Shingles (2016), Furnace, A/C, & Deck (2019), HWT, Windows & Backdoor (2022), Eavestroughs & Downspouts (2020). Located near all amenities, schools & parks

Built in 1989

Essential Information

MLS® #	E4463215
Price	\$489,999



Bedrooms	5
Bathrooms	3.50
Full Baths	3
Half Baths	1
Square Footage	1,876
Acres	0.00
Year Built	1989
Type	Single Family
Sub-Type	Detached Single Family
Style	2 Storey
Status	Active

Community Information

Address	15234 59b Street
Area	Edmonton
Subdivision	Mcleod
City	Edmonton
County	ALBERTA
Province	AB
Postal Code	T5A 1Y7

Amenities

Amenities	Air Conditioner, Deck
Parking	Double Garage Attached

Interior

Interior Features	ensuite bathroom
Appliances	Air Conditioning-Central, Dishwasher-Built-In, Dryer, Garage Control, Garage Opener, Refrigerator, Storage Shed, Stove-Electric, Vacuum System Attachments, Vacuum Systems, Washer, Window Coverings
Heating	Forced Air-1, Natural Gas
Fireplace	Yes
Fireplaces	Mantel, Tile Surround
Stories	3
Has Basement	Yes
Basement	Full, Finished

Exterior

Exterior	Wood, Brick, Vinyl
----------	--------------------

Exterior Features	Cul-De-Sac, Fenced, Landscaped, Park/Reserve, Playground Nearby, Public Transportation, Schools, Shopping Nearby
Roof	Asphalt Shingles
Construction	Wood, Brick, Vinyl
Foundation	Concrete Perimeter

School Information

Elementary	McLeod
Middle	Steel Heights
High	M.E. LaZerte

Additional Information

Date Listed	October 23rd, 2025
Days on Market	12
Zoning	Zone 02

DATA IS DEEMED RELIABLE BUT IS NOT GUARANTEED ACCURATE BY THE REALTORS® ASSOCIATION OF EDMONTON. COPYRIGHT 2025 BY THE REALTORS® ASSOCIATION OF EDMONTON. ALL RIGHTS RESERVED. Trademarks are owned or controlled by the Canadian Real Estate Association (CREA) and identify real estate professionals who are members of CREA (REALTOR®, REALTORS®) and/or the quality of services they provide (MLS®, Multiple Listing Service®)

Listing information last updated on November 4th, 2025 at 2:02am MST