

\$319,000 - 10336 154 Street, Edmonton

MLS® #E4461045

\$319,000

3 Bedroom, 2.00 Bathroom, 1,018 sqft

Single Family on 0.00 Acres

Canora, Edmonton, AB

Once in a while, a fantastic opportunity like this comes along! This beautifully updated Bi-Level half duplex in Canora offers incredible value and convenience. Featuring a newer vinyl exterior, fresh paint, and a modern interior, this home shines inside and out. The renovated kitchen boasts granite countertops, and the bathrooms have been stylishly upgraded. Enjoy a spacious living room with a cozy wood-burning fireplace. With 3 bedrooms, 2 full baths, and a large partially finished basement with a separate entrance, there's great potential to develop it into a secondary suite or create additional living space. The fenced backyard has room for a future garage with alley access. Ideally located near the future LRT station yet tucked away in a quiet, mature neighborhood close to 149 Street's best restaurants, schools, and amenities. Easy access to Downtown, West Edmonton Mall, Whitemud Drive, and Anthony Henday makes this a smart investment and a perfect first home.

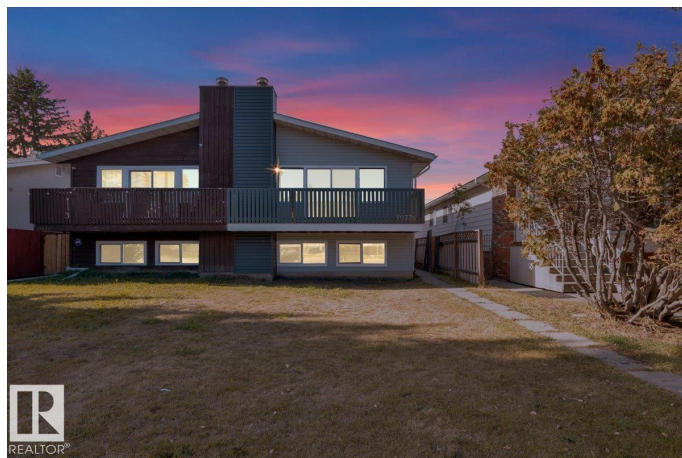
Built in 1978

Essential Information

MLS® # E4461045

Price \$319,000

Bedrooms 3



Bathrooms	2.00
Full Baths	2
Square Footage	1,018
Acres	0.00
Year Built	1978
Type	Single Family
Sub-Type	Half Duplex
Style	Bi-Level
Status	Active

Community Information

Address	10336 154 Street
Area	Edmonton
Subdivision	Canora
City	Edmonton
County	ALBERTA
Province	AB
Postal Code	T5P 2H6

Amenities

Amenities	Deck
Parking	Parking Pad Cement/Paved

Interior

Appliances	Dishwasher-Built-In, Dryer, Garburator, Hood Fan, Refrigerator, Stove-Electric, Washer, Window Coverings
Heating	Forced Air-1, Natural Gas
Fireplace	Yes
Fireplaces	Brick Facing, Corner, Mantel
Stories	1
Has Basement	Yes
Basement	Full, Partially Finished

Exterior

Exterior	Wood
Exterior Features	Back Lane, Fenced, Landscaped, Park/Reserve, Playground Nearby, Public Transportation, Schools, Shopping Nearby
Roof	Asphalt Shingles
Construction	Wood

Foundation Concrete Perimeter

School Information

Elementary Brightview
Middle Britannia
High Ross Sheppard

Additional Information

Date Listed October 6th, 2025
Days on Market 2
Zoning Zone 21

DATA IS DEEMED RELIABLE BUT IS NOT GUARANTEED ACCURATE BY THE REALTORS® ASSOCIATION OF EDMONTON. COPYRIGHT 2025 BY THE REALTORS® ASSOCIATION OF EDMONTON. ALL RIGHTS RESERVED.Trademarks are owned or controlled by the Canadian Real Estate Association (CREA) and identify real estate professionals who are members of CREA (REALTOR®, REALTORS®) and/or the quality of services they provide (MLS®, Multiple Listing Service®)
Listing information last updated on October 8th, 2025 at 6:17am MDT