

# \$129,000 - 208 1620 48 Street, Edmonton

MLS® #E4457645

**\$129,000**

2 Bedroom, 1.00 Bathroom, 1,039 sqft

Condo / Townhouse on 0.00 Acres

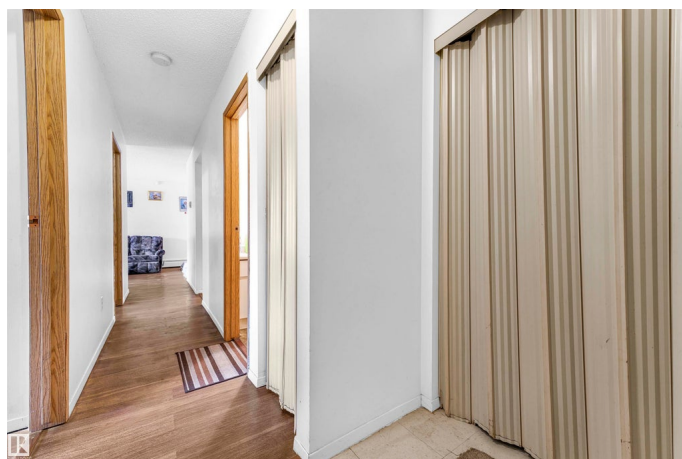
Pollard Meadows, Edmonton, AB

Absolutely immaculate 2-bedroom, 1000 sq ft corner unit located on the 2nd floor. This bright and spacious condo offers an elevator, same floor laundry, secure entry, and an energized parking stall for your convenience. Enjoy a lifestyle surrounded by amenities, just steps to walking trails, a park, Pollard Meadows Elementary School, and walking distance to the Gurdwara. Only minutes away from Millwoods Transit Centre, making your commute stress free. Nestled in the desirable Millwoods Terrace, this property is ideally located close to schools, shopping, transit, and major roadways, a perfect combination of comfort, style, and accessibility.

Built in 1981

## Essential Information

MLS® #	E4457645
Price	\$129,000
Bedrooms	2
Bathrooms	1.00
Full Baths	1
Square Footage	1,039
Acres	0.00
Year Built	1981
Type	Condo / Townhouse
Sub-Type	Lowrise Apartment



Style	Single Level Apartment
Status	Active

### Community Information

Address	208 1620 48 Street
Area	Edmonton
Subdivision	Pollard Meadows
City	Edmonton
County	ALBERTA
Province	AB
Postal Code	T5L 5P1

### Amenities

Amenities	Parking-Visitor
Parking Spaces	1
Parking	Stall

### Interior

Appliances	Dishwasher-Built-In, Refrigerator, Stove-Electric
Heating	Forced Air-1, Natural Gas
# of Stories	4
Stories	1
Has Basement	Yes
Basement	None, Unfinished

### Exterior

Exterior	Wood, Concrete
Exterior Features	Public Transportation, Schools, Shopping Nearby
Roof	Asphalt Shingles
Construction	Wood, Concrete
Foundation	Concrete Perimeter

### Additional Information

Date Listed	September 12th, 2025
Days on Market	1
Zoning	Zone 29
Condo Fee	\$542

DATA IS DEEMED RELIABLE BUT IS NOT GUARANTEED ACCURATE BY THE REALTORS® ASSOCIATION OF EDMONTON. COPYRIGHT 2025 BY THE REALTORS® ASSOCIATION OF EDMONTON. ALL RIGHTS RESERVED. Trademarks are owned or controlled by the Canadian Real Estate Association (CREA) and identify real

estate professionals who are members of CREA (REALTOR®®, REALTORS®®) and/or the quality of services they provide (MLS®®, Multiple Listing Service®®)

Listing information last updated on September 13th, 2025 at 3:02pm MDT