

## \$249,900 - 320 Spruce Ridge Road, Spruce Grove

MLS® #E4441920

**\$249,900**

3 Bedroom, 2.00 Bathroom, 1,003 sqft  
Condo / Townhouse on 0.00 Acres

Spruce Ridge, Spruce Grove, AB

Experience living in the wonderful community of Spruce Ridge. This lovely townhouse has 3 bedrooms 1.5 bathrooms. Two assigned parking stalls, the Basement is ready to be finished to your personal touch. The home features Air Conditioning, a deck and is walking distance to spruce ridge park.

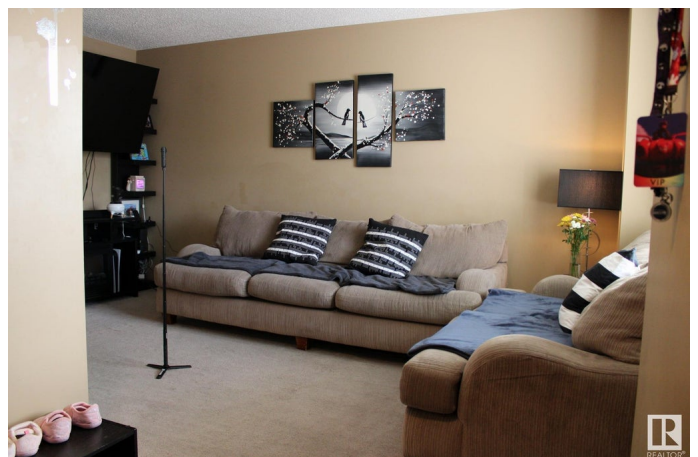
Built in 2011

### Essential Information

MLS® #	E4441920
Price	\$249,900
Bedrooms	3
Bathrooms	2.00
Full Baths	2
Square Footage	1,003
Acres	0.00
Year Built	2011
Type	Condo / Townhouse
Sub-Type	Townhouse
Style	2 Storey
Status	Active

### Community Information

Address	320 Spruce Ridge Road
Area	Spruce Grove
Subdivision	Spruce Ridge



City	Spruce Grove
County	ALBERTA
Province	AB
Postal Code	T7X 0H5

### **Amenities**

Amenities	Air Conditioner, Deck
Parking	2 Outdoor Stalls

### **Interior**

Appliances	Air Conditioning-Central, Dishwasher-Built-In, Dryer, Refrigerator, Stove-Electric, Washer
Heating	Forced Air-1, Natural Gas
Stories	2
Has Basement	Yes
Basement	Full, Unfinished

### **Exterior**

Exterior	Wood, Vinyl
Exterior Features	Back Lane, Fenced
Roof	Asphalt Shingles
Construction	Wood, Vinyl
Foundation	Concrete Perimeter

### **Additional Information**

Date Listed	June 12th, 2025
Days on Market	3
Zoning	Zone 91
Condo Fee	\$308

DATA IS DEEMED RELIABLE BUT IS NOT GUARANTEED ACCURATE BY THE REALTORS® ASSOCIATION OF EDMONTON. COPYRIGHT 2025 BY THE REALTORS® ASSOCIATION OF EDMONTON. ALL RIGHTS RESERVED.Trademarks are owned or controlled by the Canadian Real Estate Association (CREA) and identify real estate professionals who are members of CREA (REALTOR®, REALTORS®) and/or the quality of services they provide (MLS®, Multiple Listing Service®)

Listing information last updated on June 15th, 2025 at 7:32pm MDT