

\$215,000 - 3040 Spence Wynd, Edmonton

MLS® #E4440403

\$215,000

2 Bedroom, 1.00 Bathroom, 874 sqft

Condo / Townhouse on 0.00 Acres

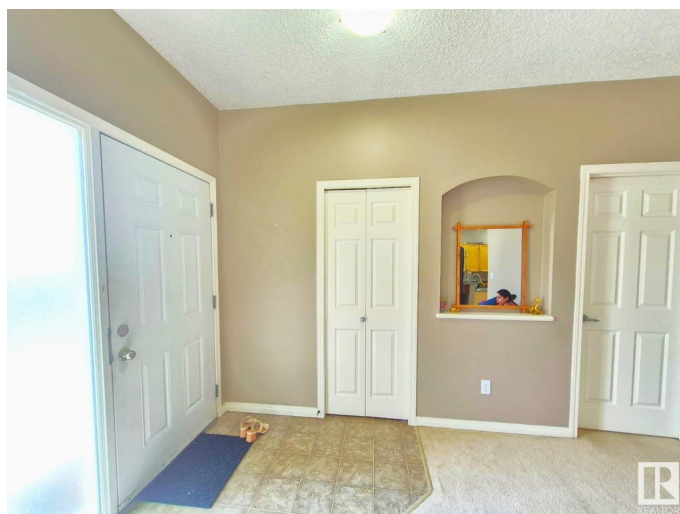
Summerside, Edmonton, AB

Welcome to Lake Summerside â€“ where every season brings new ways to relax, work, and play! This beautiful 2-bedroom condo offers access to an incredible lifestyle, including a private beach, swimming, boating,, tennis, and more. In the summer, turn the beach into your work-from-home haven; in winter, enjoy skating, and renting out the facility for gatherings. Inside, you'll find a bright and spacious living area filled with natural light, flowing effortlessly into the dining space opening to patio throyugh sliding door. The kitchen features warm maple cabinetry, classic white appliances, and a generous peninsula for extra prep space along with pantry. Adjacent to the kitchen, a combined laundry and storage area adds everyday convenience. The unit includes 2 bedrooms, with the primary suite offering his and her closets with built-in organizers, and a full 4-piece bathroom. One assigned parking stall is included.

Built in 2006

Essential Information

MLS® #	E4440403
Price	\$215,000
Bedrooms	2
Bathrooms	1.00
Full Baths	1



Square Footage	874
Acres	0.00
Year Built	2006
Type	Condo / Townhouse
Sub-Type	Carriage
Style	Bungalow
Status	Active

Community Information

Address	3040 Spence Wynd
Area	Edmonton
Subdivision	Summerside
City	Edmonton
County	ALBERTA
Province	AB
Postal Code	T6X 1N7

Amenities

Amenities	Detectors Smoke, Parking-Plug-Ins, Vinyl Windows
Parking Spaces	1
Parking	Stall

Interior

Appliances	Dishwasher-Built-In, Dryer, Hood Fan, Refrigerator, Stove-Electric, Washer
Heating	Forced Air-1, Natural Gas
Stories	1
Has Basement	Yes
Basement	None, No Basement

Exterior

Exterior	Wood, Vinyl
Exterior Features	Landscaped, Playground Nearby, Public Transportation, Schools, Shopping Nearby, Treed Lot
Roof	Asphalt Shingles
Construction	Wood, Vinyl
Foundation	Concrete Perimeter

Additional Information

Date Listed	June 4th, 2025
Days on Market	12
Zoning	Zone 53
HOA Fees	453.02
HOA Fees Freq.	Annually
Condo Fee	\$317

DATA IS DEEMED RELIABLE BUT IS NOT GUARANTEED ACCURATE BY THE REALTORS® ASSOCIATION OF EDMONTON. COPYRIGHT 2025 BY THE REALTORS® ASSOCIATION OF EDMONTON. ALL RIGHTS RESERVED. Trademarks are owned or controlled by the Canadian Real Estate Association (CREA) and identify real estate professionals who are members of CREA (REALTOR®, REALTORS®) and/or the quality of services they provide (MLS®, Multiple Listing Service®)

Listing information last updated on June 16th, 2025 at 7:17am MDT