

\$577,769 - 4813 Cawsey Terrace, Edmonton

MLS® #E4440377

\$577,769

3 Bedroom, 2.50 Bathroom, 1,843 sqft

Single Family on 0.00 Acres

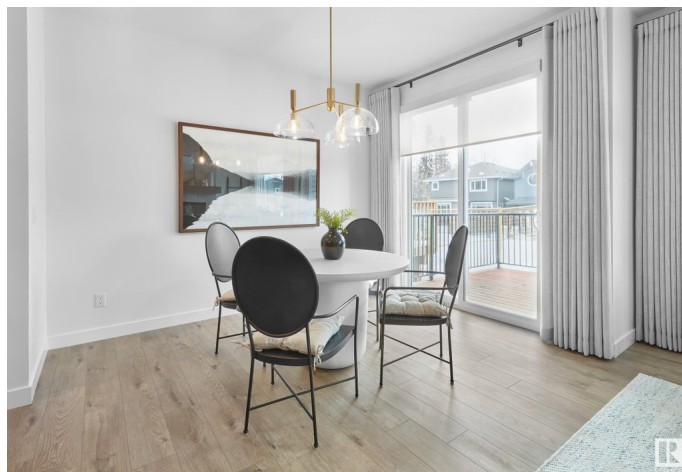
Chappelle Area, Edmonton, AB

West facing yard backing onto a walking path *Deck and landscaping promotion* The Rundle by Brookfield Residential offers 1843 sq. ft. of stylish and functional living in the desirable SW community of Chappelle Gardens. The main floor offers 3CM quartz, luxury vinyl plank flooring and 9 ft ceilings. The upgraded kitchen includes a stainless steel double door fridge with an internal ice/water dispenser, chimney hoodfan, cabinet risers to the ceiling, built in microwave, electric range, and dishwasher. The gas line to range is included, giving you the opportunity to upgrade to a gas range. The second level features your spacious bonus and a laundry room equipped with a washer/dryer. The ensuite features a FULLY TILED SHOWER with an acrylic base and dual vanities. Please note: NO SIDE ENTRY. Just steps from Donald R. Getty (k-9 school). Listing photos are of show home.

Built in 2025

Essential Information

MLS® #	E4440377
Price	\$577,769
Bedrooms	3
Bathrooms	2.50
Full Baths	2
Half Baths	1



Square Footage	1,843
Acres	0.00
Year Built	2025
Type	Single Family
Sub-Type	Detached Single Family
Style	2 Storey
Status	Active

Community Information

Address	4813 Cawsey Terrace
Area	Edmonton
Subdivision	Chappelle Area
City	Edmonton
County	ALBERTA
Province	AB
Postal Code	T6W 5M7

Amenities

Amenities	Carbon Monoxide Detectors, Ceiling 9 ft., Deck, Smart/Program. Thermostat, HRV System
Parking	Double Garage Attached

Interior

Interior Features	ensuite bathroom
Appliances	Dishwasher-Built-In, Dryer, Garage Control, Garage Opener, Oven-Microwave, Refrigerator, Stove-Electric, Washer
Heating	Forced Air-1, Natural Gas
Fireplace	Yes
Fireplaces	Insert
Stories	2
Has Basement	Yes
Basement	Full, Unfinished

Exterior

Exterior	Wood, Vinyl
Exterior Features	Airport Nearby, Golf Nearby, Landscaped, Playground Nearby, Schools, Shopping Nearby
Roof	Asphalt Shingles
Construction	Wood, Vinyl

Foundation Concrete Perimeter

School Information

Elementary DONALD R. GETTY K-9
Middle St. Thomas Aquinas K-9
High DR. ANNE ANDERSON

Additional Information

Date Listed June 4th, 2025
Days on Market 14
Zoning Zone 55
HOA Fees 426
HOA Fees Freq. Annually

DATA IS DEEMED RELIABLE BUT IS NOT GUARANTEED ACCURATE BY THE REALTORS® ASSOCIATION OF EDMONTON. COPYRIGHT 2025 BY THE REALTORS® ASSOCIATION OF EDMONTON. ALL RIGHTS RESERVED.Trademarks are owned or controlled by the Canadian Real Estate Association (CREA) and identify real estate professionals who are members of CREA (REALTOR®, REALTORS®) and/or the quality of services they provide (MLS®, Multiple Listing Service®)
Listing information last updated on June 18th, 2025 at 2:32am MDT