

\$475,000 - 22703 98 Avenue, Edmonton

MLS® #E4440061

\$475,000

3 Bedroom, 2.50 Bathroom, 1,297 sqft

Single Family on 0.00 Acres

Secord, Edmonton, AB

PRICED TO SELL! Double Detached Garage! Fully Landscaped! Rec Room in the Basement! --- This beautifully maintained 3-bedroom, 2.5-bathroom home is the perfect blend of modern style and everyday comfort. Step inside to discover a bright, open-concept main floor thatâ€™s perfect for entertaining or enjoying cozy family nights. The kitchen shines with sleek quartz countertops and ample space for cooking, gathering, and creating memories. Upstairs, youâ€™ll find three spacious bedrooms, including a serene primary suite with plenty of natural light. The partially finished basement features a generous rec roomâ€”ideal for a home theatre, playroom, or workout spaceâ€”with a full bathroom already roughed in and ready for your personal touch. Outside, enjoy summer evenings on the large deck while the double detached garage keeps your vehicles warm and dry year-round. Located just steps to schools, parks, and walking trails, and minutes from shopping and major public transit routes.

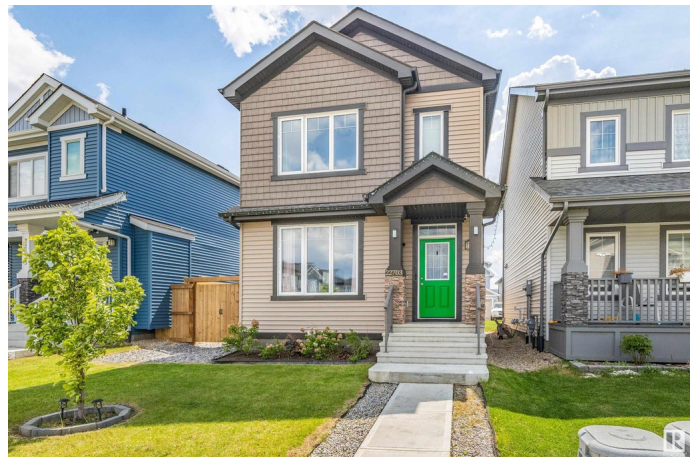
Built in 2019

Essential Information

MLS® # E4440061

Price \$475,000

Bedrooms 3



Bathrooms	2.50
Full Baths	2
Half Baths	1
Square Footage	1,297
Acres	0.00
Year Built	2019
Type	Single Family
Sub-Type	Detached Single Family
Style	2 Storey
Status	Active

Community Information

Address	22703 98 Avenue
Area	Edmonton
Subdivision	Secord
City	Edmonton
County	ALBERTA
Province	AB
Postal Code	T5T 7M4

Amenities

Amenities	On Street Parking, Deck, Detectors Smoke, Hot Water Electric, Vinyl Windows
Parking	Double Garage Detached

Interior

Interior Features	ensuite bathroom
Appliances	Dishwasher-Built-In, Dryer, Garage Control, Garage Opener, Microwave Hood Fan, Refrigerator, Stove-Electric, Washer
Heating	Forced Air-1, Natural Gas
Stories	3
Has Basement	Yes
Basement	Full, Partially Finished

Exterior

Exterior	Wood, Vinyl
Exterior Features	Back Lane, Fenced, Landscaped, Low Maintenance Landscape, Playground Nearby, Schools, Shopping Nearby
Roof	Asphalt Shingles

Construction	Wood, Vinyl
Foundation	Concrete Perimeter

School Information

Elementary	David Thomas King School
Middle	David Thomas King School

Additional Information

Date Listed	June 3rd, 2025
Days on Market	13
Zoning	Zone 58

DATA IS DEEMED RELIABLE BUT IS NOT GUARANTEED ACCURATE BY THE REALTORS® ASSOCIATION OF EDMONTON. COPYRIGHT 2025 BY THE REALTORS® ASSOCIATION OF EDMONTON. ALL RIGHTS RESERVED.Trademarks are owned or controlled by the Canadian Real Estate Association (CREA) and identify real estate professionals who are members of CREA (REALTOR®, REALTORS®) and/or the quality of services they provide (MLS®, Multiple Listing Service®)

Listing information last updated on June 16th, 2025 at 4:47am MDT