

## \$225,000 - 392 Silver Berry Road, Edmonton

MLS® #E4438627

**\$225,000**

2 Bedroom, 2.00 Bathroom, 858 sqft  
Condo / Townhouse on 0.00 Acres

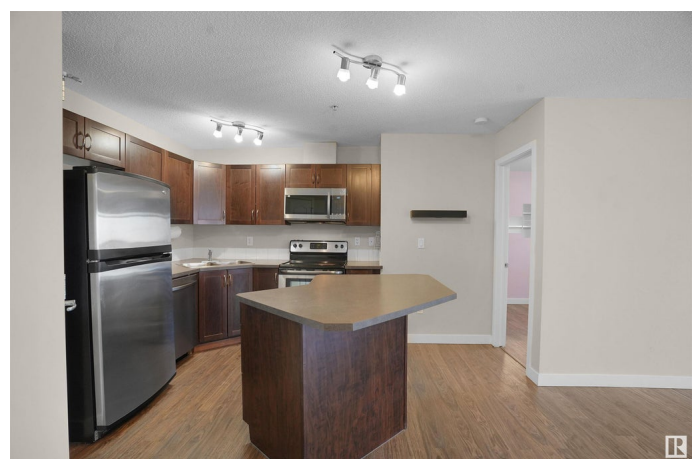
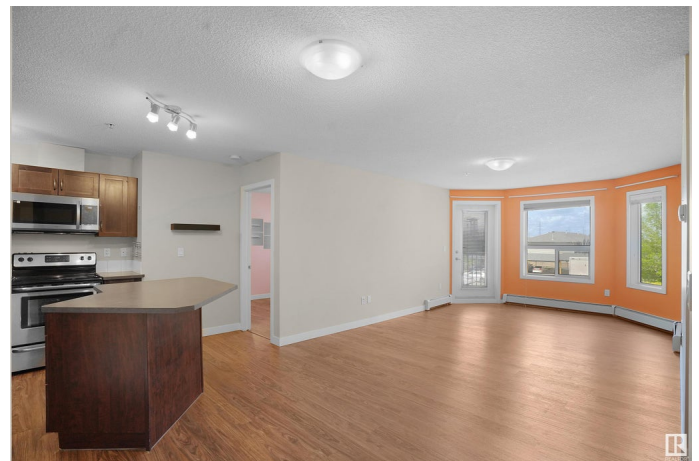
Silver Berry, Edmonton, AB

FANTASTIC VALUE IN A PRIME LOCATION... Walking distance to Brand New HIGH SCHOOL & REC CENTER. This spacious 2 BEDROOM, 2 BATHROOM unit comes complete with U/G PARKING STALL, STORAGE CAGE, and CAR WASH â€” WOW!! The building offers great AMENITIES like an EXERCISE ROOM and a PARTY ROOM for entertaining, all just steps from SILVERBERRY PARK â€” perfect for DOG WALKS, OUTDOOR FUN, or a GAME OF SOCCER. Inside, you'll love the functional layout featuring IN-SUITE LAUNDRY and a WALK-THROUGH CLOSET leading to a PRIVATE ENSUITE in the primary bedroom. Condo fees include HEAT AND WATER for added peace of mind. 2 Min Short WALK to SHOPPERS, SAVEN-ON-FOOD, RESTAURANTS, BANKS, and a PLAYGROUND, with QUICK ACCESS to ANTHONY HENDAY and WHITEMUD DRIVE for easy commuting. A MUST-SEE in a SOUGHT-AFTER COMMUNITY!

Built in 2009

### Essential Information

MLS® #	E4438627
Price	\$225,000
Bedrooms	2



Bathrooms	2.00
Full Baths	2
Square Footage	858
Acres	0.00
Year Built	2009
Type	Condo / Townhouse
Sub-Type	Lowrise Apartment
Style	Single Level Apartment
Status	Active

### Community Information

Address	392 Silver Berry Road
Area	Edmonton
Subdivision	Silver Berry
City	Edmonton
County	ALBERTA
Province	AB
Postal Code	T6T 0H1

### Amenities

Amenities	Car Wash, Closet Organizers, Deck, Exercise Room, Parking-Visitor, Party Room, Security Door, Storage Cage
Parking Spaces	1
Parking	Underground

### Interior

Interior Features	ensuite bathroom
Appliances	Dryer, Refrigerator, Stove-Electric, Washer, Window Coverings
Heating	Baseboard, Natural Gas
# of Stories	4
Stories	1
Has Basement	Yes
Basement	None, No Basement

### Exterior

Exterior	Wood, Brick, Vinyl
Exterior Features	Playground Nearby, Public Transportation, Schools, Shopping Nearby, See Remarks
Roof	Asphalt Shingles

Construction	Wood, Brick, Vinyl
Foundation	Concrete Perimeter

**Additional Information**

Date Listed	May 26th, 2025
Days on Market	21
Zoning	Zone 30
Condo Fee	\$395

DATA IS DEEMED RELIABLE BUT IS NOT GUARANTEED ACCURATE BY THE REALTORS® ASSOCIATION OF EDMONTON. COPYRIGHT 2025 BY THE REALTORS® ASSOCIATION OF EDMONTON. ALL RIGHTS RESERVED.Trademarks are owned or controlled by the Canadian Real Estate Association (CREA) and identify real estate professionals who are members of CREA (REALTOR®, REALTORS®) and/or the quality of services they provide (MLS®, Multiple Listing Service®)

Listing information last updated on June 16th, 2025 at 4:47am MDT