

Courtesy Of Jessie S Sahota Of Liv Real Estate

# **\$799,888 - 10725 132 Street, Edmonton**

MLS® #E4437707

**\$799,888**

5 Bedroom, 4.00 Bathroom, 1,967 sqft  
Single Family on 0.00 Acres

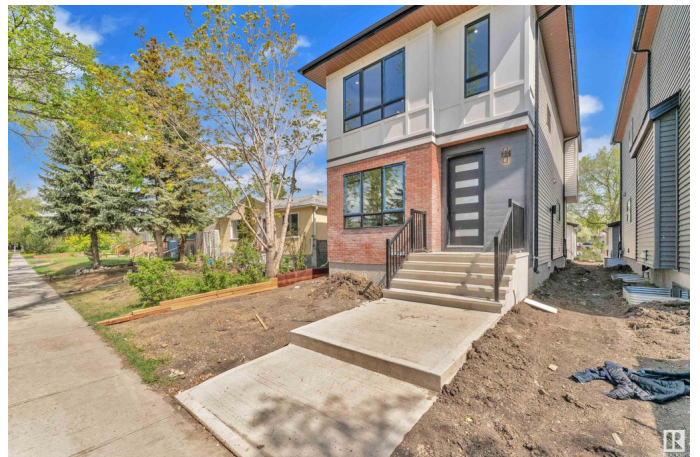
Westmount, Edmonton, AB

Stunning new infill in Westmount featuring a 2-bedroom legal basement suite! This modern 2-storey home offers just under 2,000 sq ft above grade with a bright open layout. The main floor features a spacious living area, custom kitchen with two-tone cabinetry and stylish tile backsplash, a full bathroom, and a flex room perfect for a home office or guest bedroom. Upstairs you'll find 3 generous bedrooms, including a primary suite with walk-in closet and dual vanity ensuite, plus upper laundry and an additional full bath. The basement has a fully finished 2-bedroom legal suite with separate entrance—ideal for rental income or extended family. Complete with a detach double garage! Located just steps from Westmount Off-Leash Park, minutes to downtown, 124 Street shops, top-rated schools, and more. A perfect blend of luxury and investment opportunity in one of Edmonton's most sought-after neighbourhoods!

Built in 2024

## **Essential Information**

MLS® #	E4437707
Price	\$799,888
Bedrooms	5
Bathrooms	4.00



Full Baths	4
Square Footage	1,967
Acres	0.00
Year Built	2024
Type	Single Family
Sub-Type	Detached Single Family
Style	2 Storey
Status	Active

### Community Information

Address	10725 132 Street
Area	Edmonton
Subdivision	Westmount
City	Edmonton
County	ALBERTA
Province	AB
Postal Code	T5M 1C8

### Amenities

Amenities	Ceiling 9 ft., Detectors Smoke, No Animal Home, No Smoking Home, See Remarks
Parking	Double Garage Detached

### Interior

Interior Features	ensuite bathroom
Appliances	Garage Control, Garage Opener, Hood Fan
Heating	Forced Air-2, Natural Gas
Stories	3
Has Suite	Yes
Has Basement	Yes
Basement	Full, Finished

### Exterior

Exterior	Concrete, Brick, Vinyl
Exterior Features	Flat Site, Level Land, Playground Nearby, Public Transportation, Schools, Shopping Nearby
Roof	Asphalt Shingles
Construction	Concrete, Brick, Vinyl
Foundation	Concrete Perimeter

**Additional Information**

Date Listed            May 21st, 2025  
Days on Market       88  
Zoning                 Zone 07

DATA IS DEEMED RELIABLE BUT IS NOT GUARANTEED ACCURATE BY THE REALTORS® ASSOCIATION OF EDMONTON. COPYRIGHT 2025 BY THE REALTORS® ASSOCIATION OF EDMONTON. ALL RIGHTS RESERVED.Trademarks are owned or controlled by the Canadian Real Estate Association (CREA) and identify real estate professionals who are members of CREA (REALTOR®, REALTORS®) and/or the quality of services they provide (MLS®, Multiple Listing Service®)  
Listing information last updated on August 17th, 2025 at 12:32pm MDT