

\$469,900 - 10460 50 Street, Edmonton

MLS® #E4437153

\$469,900

5 Bedroom, 2.00 Bathroom, 1,136 sqft

Single Family on 0.00 Acres

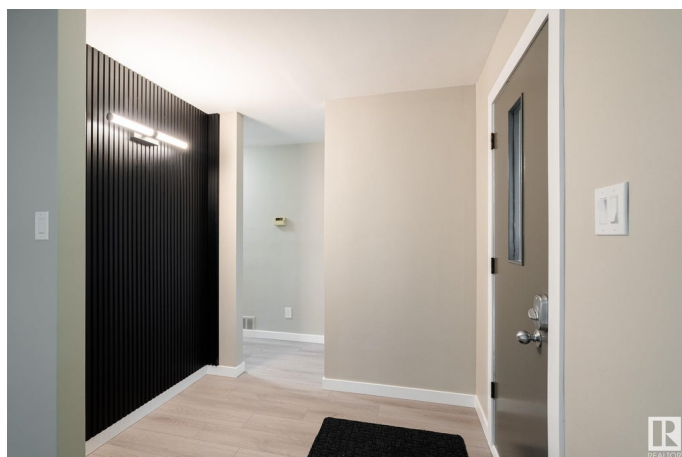
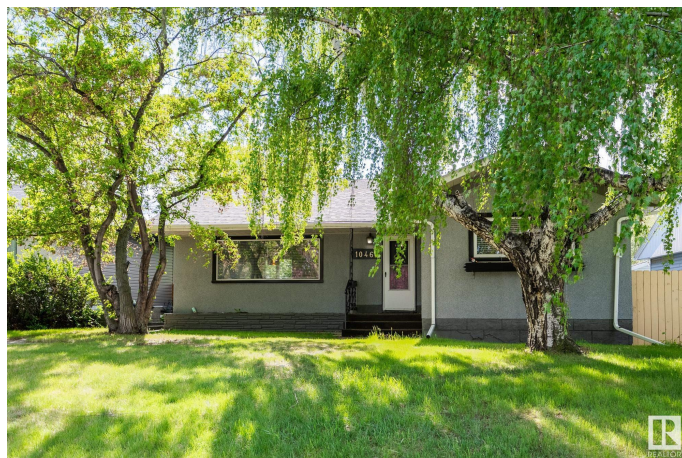
Fulton Place, Edmonton, AB

Fully Renovated Fulton Place Gem with LEGAL BASEMENT SUITE! Boasting 3 spacious bedrooms upstairs and a 2-bedroom legal suite in the basement, this property offers an ideal setup for multigenerational living, a fantastic mortgage helper and an incredible investment opportunity. Step inside to discover brand-new flooring throughout and fresh paint and trim work. The open and modern design ensures comfort and functionality for today's lifestyle. Basement looks brand new with modern finishings. Outside, you'll find a large backyard, perfect for families, entertaining, or gardening. A double detached garage and RV parking provide ample space for all your vehicles and toys. Nestled in a quiet, mature neighborhood with excellent schools, parks, and easy access to amenities, this move-in-ready home is an outstanding opportunity for homeowners and investors alike.

Built in 1956

Essential Information

| | |
|------------|-----------|
| MLS® # | E4437153 |
| Price | \$469,900 |
| Bedrooms | 5 |
| Bathrooms | 2.00 |
| Full Baths | 2 |



| | |
|----------------|------------------------|
| Square Footage | 1,136 |
| Acres | 0.00 |
| Year Built | 1956 |
| Type | Single Family |
| Sub-Type | Detached Single Family |
| Style | Bungalow |
| Status | Active |

Community Information

| | |
|-------------|-----------------|
| Address | 10460 50 Street |
| Area | Edmonton |
| Subdivision | Fulton Place |
| City | Edmonton |
| County | ALBERTA |
| Province | AB |
| Postal Code | T6A 2C6 |

Amenities

| | |
|-----------|------------------------------|
| Amenities | Secured Parking, See Remarks |
| Parking | Double Garage Detached |

Interior

| | |
|--------------|--|
| Appliances | Dishwasher-Built-In, Dryer, Hood Fan, Refrigerator, Stove-Electric |
| Heating | Forced Air-1, Natural Gas |
| Stories | 2 |
| Has Suite | Yes |
| Has Basement | Yes |
| Basement | Full, Finished |

Exterior

| | |
|-------------------|--|
| Exterior | Wood, Stucco |
| Exterior Features | Back Lane, Fenced, Flat Site, Fruit Trees/Shrubs, Playground Nearby, Public Transportation, Schools, Shopping Nearby |
| Roof | Asphalt Shingles |
| Construction | Wood, Stucco |
| Foundation | Concrete Perimeter |

Additional Information

| | |
|-------------|----------------|
| Date Listed | May 17th, 2025 |
|-------------|----------------|

Days on Market 16

Zoning Zone 19

DATA IS DEEMED RELIABLE BUT IS NOT GUARANTEED ACCURATE BY THE REALTORS® ASSOCIATION OF EDMONTON. COPYRIGHT 2025 BY THE REALTORS® ASSOCIATION OF EDMONTON. ALL RIGHTS RESERVED. Trademarks are owned or controlled by the Canadian Real Estate Association (CREA) and identify real estate professionals who are members of CREA (REALTOR®, REALTORS®) and/or the quality of services they provide (MLS®, Multiple Listing Service®)

Listing information last updated on June 2nd, 2025 at 9:17am MDT