

\$850,000 - 7020 Kiviaq Crescent, Edmonton

MLS® #E4434035

\$850,000

4 Bedroom, 4.00 Bathroom, 2,946 sqft

Single Family on 0.00 Acres

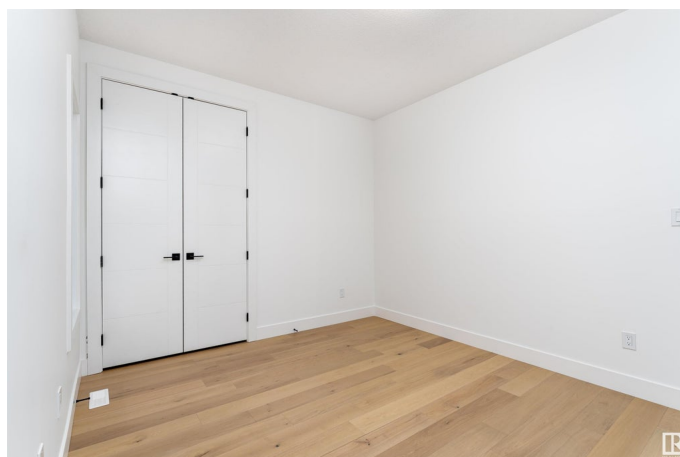
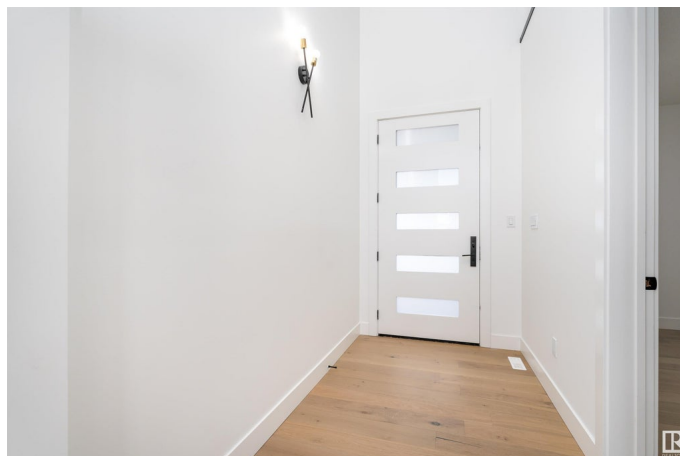
Keswick Area, Edmonton, AB

Discover modern elegance in this stunning two-storey home located in the Keswick Area, Edmonton. Designed with a spacious and contemporary aesthetic, the bright and airy living room features soaring high ceilings and an abundance of windows. The sleek white kitchen offers plenty of cabinets, counter space, a pantry, and a server room for added convenience. The main floor also includes a bedroom or home office, mudroom, dining room, and a 3-piece bathroom. Upstairs, a versatile bonus room awaits, along with a luxurious primary bedroom featuring a 5-piece ensuite and a walk-in closet. The second bedroom also boasts a walk-in closet and a private 3-piece ensuite. A third bedroom with a walk-in closet, a 4-piece bathroom, and a laundry room complete the upper floor. space, and functionality for modern living. This home includes an attached double garage, offering style

Built in 2023

Essential Information

MLS® #	E4434035
Price	\$850,000
Bedrooms	4
Bathrooms	4.00
Full Baths	4



Square Footage	2,946
Acres	0.00
Year Built	2023
Type	Single Family
Sub-Type	Detached Single Family
Style	2 Storey
Status	Active

Community Information

Address	7020 Kiviaq Crescent
Area	Edmonton
Subdivision	Keswick Area
City	Edmonton
County	ALBERTA
Province	AB
Postal Code	T6W 5N6

Amenities

Amenities	Detectors Smoke, No Animal Home, No Smoking Home
Parking	Double Garage Attached

Interior

Interior Features	ensuite bathroom
Appliances	See Remarks
Heating	Forced Air-1, Natural Gas
Stories	2
Has Basement	Yes
Basement	Full, Unfinished

Exterior

Exterior	Wood, Vinyl
Exterior Features	Playground Nearby, Public Transportation, Schools, Shopping Nearby
Roof	Asphalt Shingles
Construction	Wood, Vinyl
Foundation	Concrete Perimeter

Additional Information

Date Listed	May 1st, 2025
Days on Market	46

Zoning

Zone 56

DATA IS DEEMED RELIABLE BUT IS NOT GUARANTEED ACCURATE BY THE REALTORS® ASSOCIATION OF EDMONTON. COPYRIGHT 2025 BY THE REALTORS® ASSOCIATION OF EDMONTON. ALL RIGHTS RESERVED. Trademarks are owned or controlled by the Canadian Real Estate Association (CREA) and identify real estate professionals who are members of CREA (REALTOR®, REALTORS®) and/or the quality of services they provide (MLS®, Multiple Listing Service®)

Listing information last updated on June 16th, 2025 at 4:47am MDT