

## \$468,900 - 19 Hemingway Crescent, Spruce Grove

MLS® #E4433786

**\$468,900**

3 Bedroom, 2.50 Bathroom, 1,509 sqft

Single Family on 0.00 Acres

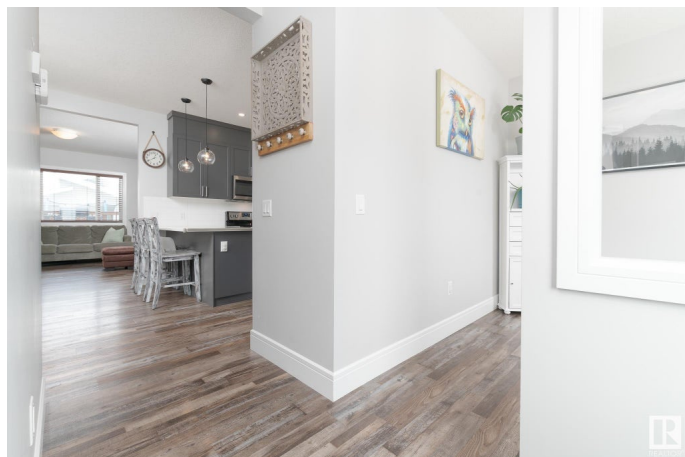
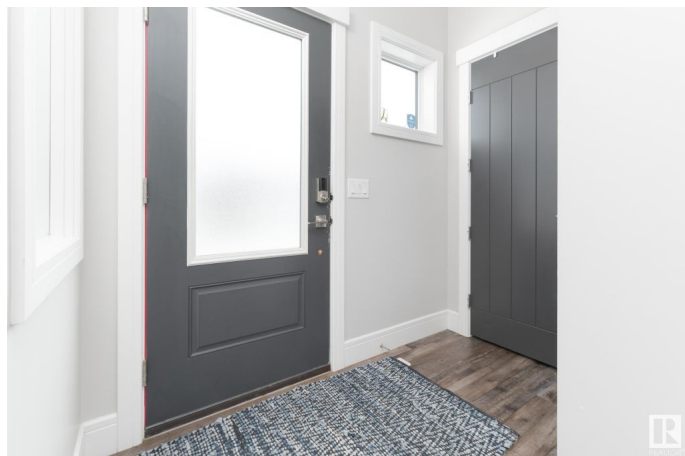
Harvest Ridge, Spruce Grove, AB

Your dream home in Harvest Ridge awaitsâ€”but donâ€™t wait too long! This beautifully designed 1500+ sq ft two-storey home is perfectly tailored for growing families. Within walking distance to schools, parks, and scenic trails, its location is just the beginning. Step inside to discover a functional main floor layout featuring a versatile den/flex spaceâ€”ideal as a playroom or a home office. Soaring 9 ft ceilings, an upgraded kitchen, and a spacious family room create a warm and inviting atmosphere on this level! Upstairs, youâ€™ll find three generously sized bedrooms, including a serene primary suite with a luxurious 5-piece en-suite, plus the convenience of upstairs laundry. Stay cool this summer with central air conditioning! Outside, enjoy all the work being done for you with a deck, fully landscaped yard, and a double detached garage. Timeless finishes and an abundance of natural light ensure comfort and elegance year-round. Seize this opportunity!

Built in 2019

### Essential Information

MLS® #	E4433786
Price	\$468,900
Bedrooms	3
Bathrooms	2.50



Full Baths	2
Half Baths	1
Square Footage	1,509
Acres	0.00
Year Built	2019
Type	Single Family
Sub-Type	Detached Single Family
Style	2 Storey
Status	Active

### **Community Information**

Address	19 Hemingway Crescent
Area	Spruce Grove
Subdivision	Harvest Ridge
City	Spruce Grove
County	ALBERTA
Province	AB
Postal Code	T7X 2L6

### **Amenities**

Amenities	Air Conditioner, Deck, See Remarks
Parking	Double Garage Detached

### **Interior**

Interior Features	ensuite bathroom
Appliances	Air Conditioning-Central, Dishwasher-Built-In, Dryer, Garage Control, Garage Opener, Microwave Hood Fan, Refrigerator, Stove-Electric, Washer, Window Coverings, TV Wall Mount
Heating	Forced Air-1, Natural Gas
Fireplace	Yes
Fireplaces	Insert
Stories	2
Has Basement	Yes
Basement	Full, Unfinished

### **Exterior**

Exterior	Wood, Vinyl
Exterior Features	Back Lane, Fenced, Landscaped, See Remarks
Roof	Asphalt Shingles

Construction	Wood, Vinyl
Foundation	Concrete Perimeter

**Additional Information**

Date Listed	May 1st, 2025
Days on Market	6
Zoning	Zone 91

DATA IS DEEMED RELIABLE BUT IS NOT GUARANTEED ACCURATE BY THE REALTORS® ASSOCIATION OF EDMONTON. COPYRIGHT 2025 BY THE REALTORS® ASSOCIATION OF EDMONTON. ALL RIGHTS RESERVED.Trademarks are owned or controlled by the Canadian Real Estate Association (CREA) and identify real estate professionals who are members of CREA (REALTOR®, REALTORS®) and/or the quality of services they provide (MLS®, Multiple Listing Service®)

Listing information last updated on May 7th, 2025 at 8:32am MDT