

\$674,900 - 6 Lucinda Terrace, St. Albert

MLS® #E4433658

\$674,900

4 Bedroom, 3.50 Bathroom, 2,251 sqft

Single Family on 0.00 Acres

Lacombe Park, St. Albert, AB

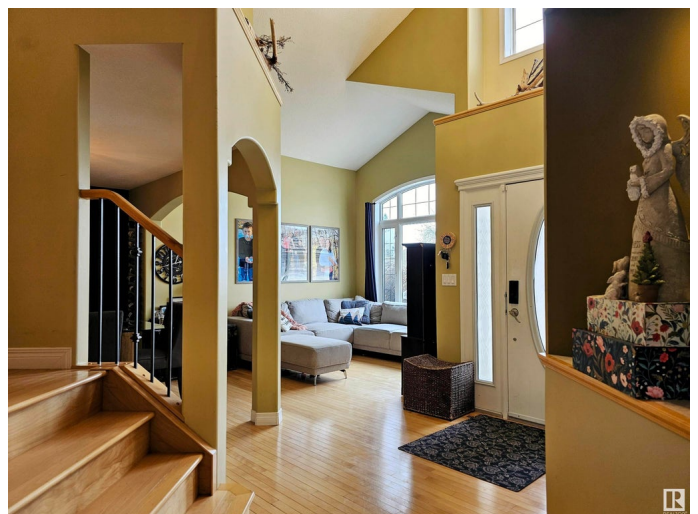
Stunning 4 bedroom home in the desirable community Lacombe Park Estates is sure to impress inside & out! Featuring a professionally landscaped yard, calming water fountain & backyard patio . Quiet cul-de-sac location includes a park area outside your front door. Main floor 18"™ ceilings provide a feeling of openness & incredible light shining off the hardwood floors on the main & upper levels. The sun-filled living room & dining area are perfect for entertaining. A custom kitchen offers upgraded appliances & granite countertops. A large back entry avoids elbow bumping & the big office space will accommodate any professional or school requirements. Upstairs the primary retreat is flooded w/ both east & west sunshine, a full ensuite spa & massive walk-in closet. Two additional bedrooms w/ a Jack & Jill bathroom. The professionally finished basement comes w/ an additional 4th bedroom, bathroom & entertaining area. Recent upgrades inc central a/c, a high efficiency furnace, dishwasher & microwave hood fan.

Built in 1999

Essential Information

MLS® # E4433658

Price \$674,900



Bedrooms	4
Bathrooms	3.50
Full Baths	3
Half Baths	1
Square Footage	2,251
Acres	0.00
Year Built	1999
Type	Single Family
Sub-Type	Detached Single Family
Style	2 Storey
Status	Active

Community Information

Address	6 Lucinda Terrace
Area	St. Albert
Subdivision	Lacombe Park
City	St. Albert
County	ALBERTA
Province	AB
Postal Code	T8N 6A6

Amenities

Amenities	Sprinkler Sys-Underground, See Remarks
Parking	Double Garage Attached

Interior

Interior Features	ensuite bathroom
Appliances	Air Conditioning-Central, Dishwasher-Built-In, Dryer, Garage Control, Garage Opener, Microwave Hood Fan, Refrigerator, Stove-Electric, Vacuum System Attachments, Vacuum Systems, Washer, Window Coverings
Heating	Forced Air-1, Natural Gas
Fireplace	Yes
Fireplaces	Tile Surround
Stories	3
Has Basement	Yes
Basement	Full, Finished

Exterior

Exterior	Wood, Vinyl
Exterior Features	Cul-De-Sac, Fruit Trees/Shrubs, Landscaped, Public Transportation, Schools, Shopping Nearby
Roof	Cedar Shakes
Construction	Wood, Vinyl
Foundation	Concrete Perimeter

Additional Information

Date Listed	May 1st, 2025
Days on Market	5
Zoning	Zone 24

DATA IS DEEMED RELIABLE BUT IS NOT GUARANTEED ACCURATE BY THE REALTORS® ASSOCIATION OF EDMONTON. COPYRIGHT 2025 BY THE REALTORS® ASSOCIATION OF EDMONTON. ALL RIGHTS RESERVED. Trademarks are owned or controlled by the Canadian Real Estate Association (CREA) and identify real estate professionals who are members of CREA (REALTOR®, REALTORS®) and/or the quality of services they provide (MLS®, Multiple Listing Service®)

Listing information last updated on May 6th, 2025 at 7:02pm MDT