

\$395,000 - 14315 80 Street, Edmonton

MLS® #E4433114

\$395,000

4 Bedroom, 2.00 Bathroom, 1,067 sqft

Single Family on 0.00 Acres

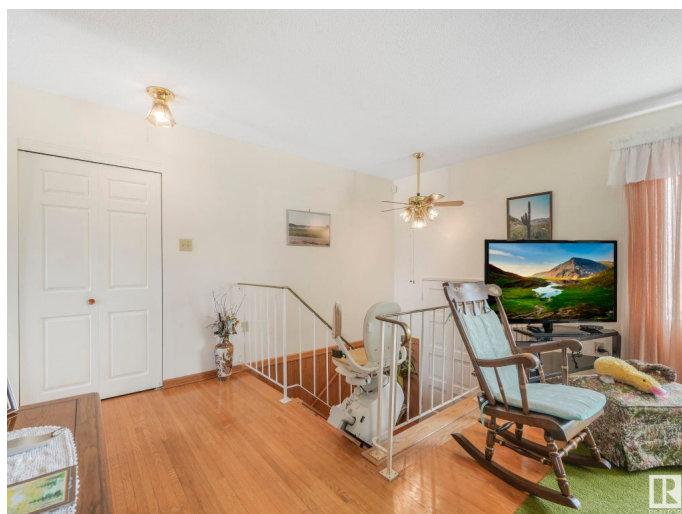
Kildare, Edmonton, AB

Wonderfully maintained original owner bi-level in Kildare. Built in 1968 this home features a bright and welcoming main floor with large west facing living room, large eat-in kitchen with plenty of storage and cooking spaces, formal dining room, a large primary bedroom, four piece main bathroom, and two additional main floor bedrooms. The fully finished basement has both front and back staircases, a massive fourth bedroom, three piece bathroom, large family room, and a craft or hobby work area. The east facing backyard has a large deck, is nicely landscaped with flower beds, and has a large double detached garage and also an oversized driveway that can park three cars.

Built in 1968

Essential Information

MLS® #	E4433114
Price	\$395,000
Bedrooms	4
Bathrooms	2.00
Full Baths	2
Square Footage	1,067
Acres	0.00
Year Built	1968
Type	Single Family



Sub-Type	Detached Single Family
Style	Bi-Level
Status	Active

Community Information

Address	14315 80 Street
Area	Edmonton
Subdivision	Kildare
City	Edmonton
County	ALBERTA
Province	AB
Postal Code	T5C 1L7

Amenities

Amenities	Deck, Detectors Smoke, See Remarks
Parking	Double Garage Detached

Interior

Appliances	Dryer, Fan-Ceiling, Garage Control, Garage Opener, Hood Fan, Oven-Built-In, Refrigerator, Storage Shed, Stove-Countertop Electric, Washer, Window Coverings
Heating	Forced Air-1, Natural Gas
Fireplace	Yes
Fireplaces	Freestanding
Stories	2
Has Basement	Yes
Basement	Full, Finished

Exterior

Exterior	Wood, Vinyl
Exterior Features	Fenced, Landscaped, Public Transportation, Schools, Shopping Nearby, See Remarks
Roof	Asphalt Shingles
Construction	Wood, Vinyl
Foundation	Concrete Perimeter

Additional Information

Date Listed	April 25th, 2025
Days on Market	5
Zoning	Zone 02

DATA IS DEEMED RELIABLE BUT IS NOT GUARANTEED ACCURATE BY THE REALTORS® ASSOCIATION OF EDMONTON. COPYRIGHT 2025 BY THE REALTORS® ASSOCIATION OF EDMONTON. ALL RIGHTS RESERVED.Trademarks are owned or controlled by the Canadian Real Estate Association (CREA) and identify real estate professionals who are members of CREA (REALTOR®, REALTORS®) and/or the quality of services they provide (MLS®, Multiple Listing Service®)

Listing information last updated on April 30th, 2025 at 4:47pm MDT