

\$187,500 - 218 13830 150 Avenue, Edmonton

MLS® #E4433016

\$187,500

2 Bedroom, 2.00 Bathroom, 898 sqft

Condo / Townhouse on 0.00 Acres

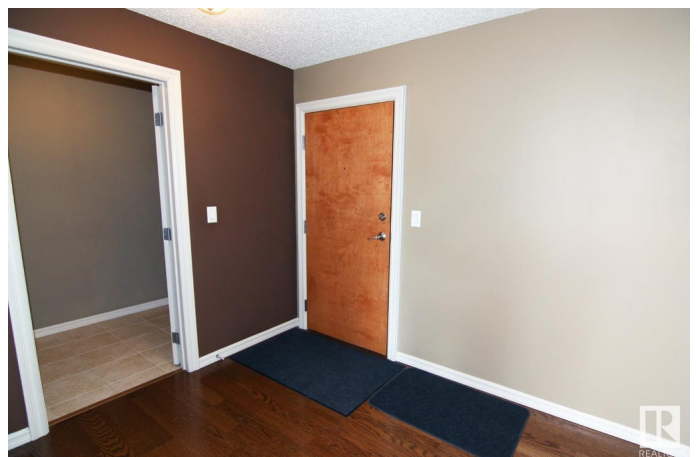
Cumberland, Edmonton, AB

Welcome to Skyview Landing! Very spacious 2 bedroom condo with 2 full baths and 2 parking stalls. Enjoy a great layout with the bright living room separating the two bedrooms for maximum privacy. The primary bedroom features a walk-through closet and 3pc. ensuite. The second bathroom adjacent to the second bedroom & main living area. Entertain with ease with a spacious kitchen with breakfast bar and ample dining space. The property has in-suite laundry & storage. Soak up some sun this summer on your west facing patio, complete with gas BBQ hook-up, over looking the quiet community of Cumberland. This unit also includes a heated underground parking stall as well as a second titled outdoor stall. The complex has plenty of visitor parking as well as an exercise room and amenities room. Conveniently located near shopping, schools, public transit, and walking trails, with easy access to Edmonton Garrison, Anthony Henday & St. Albert.

Built in 2004

Essential Information

MLS® #	E4433016
Price	\$187,500
Bedrooms	2
Bathrooms	2.00



Full Baths	2
Square Footage	898
Acres	0.00
Year Built	2004
Type	Condo / Townhouse
Sub-Type	Lowrise Apartment
Style	Single Level Apartment
Status	Active

Community Information

Address	218 13830 150 Avenue
Area	Edmonton
Subdivision	Cumberland
City	Edmonton
County	ALBERTA
Province	AB
Postal Code	T6V 1X2

Amenities

Amenities	Deck, Detectors Smoke, Exercise Room, Parking-Visitor, Secured Parking, Security Door, Natural Gas BBQ Hookup
Parking Spaces	2
Parking	Stall, Underground

Interior

Interior Features	ensuite bathroom
Appliances	Dishwasher-Built-In, Microwave Hood Fan, Refrigerator, Stacked Washer/Dryer, Stove-Electric, Window Coverings
Heating	Baseboard, Water
# of Stories	4
Stories	1
Has Basement	Yes
Basement	None, No Basement

Exterior

Exterior	Wood, Brick, Vinyl
Exterior Features	Landscaped, Public Transportation, Schools, Shopping Nearby
Roof	Asphalt Shingles
Construction	Wood, Brick, Vinyl

Foundation Concrete Perimeter

Additional Information

Date Listed April 26th, 2025
Days on Market 5
Zoning Zone 27
Condo Fee \$595

DATA IS DEEMED RELIABLE BUT IS NOT GUARANTEED ACCURATE BY THE REALTORS® ASSOCIATION OF EDMONTON. COPYRIGHT 2025 BY THE REALTORS® ASSOCIATION OF EDMONTON. ALL RIGHTS RESERVED.Trademarks are owned or controlled by the Canadian Real Estate Association (CREA) and identify real estate professionals who are members of CREA (REALTOR®, REALTORS®) and/or the quality of services they provide (MLS®, Multiple Listing Service®)
Listing information last updated on April 30th, 2025 at 10:02pm MDT