

\$699,000 - 9 Linksview Close, Spruce Grove

MLS® #E4432526

\$699,000

4 Bedroom, 3.50 Bathroom, 2,400 sqft

Single Family on 0.00 Acres

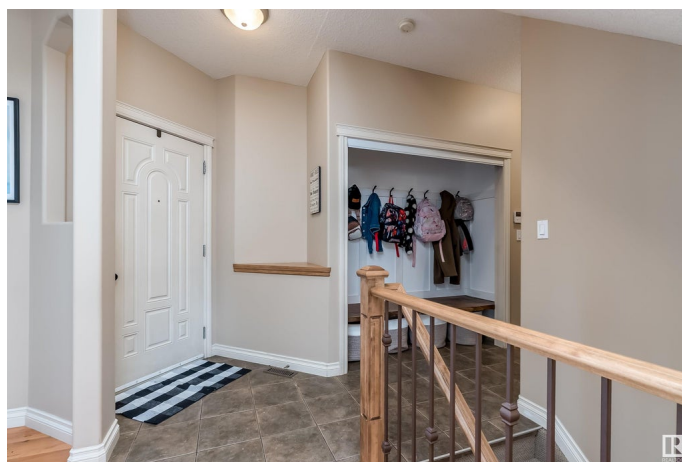
Linkside, Spruce Grove, AB

WOW! WOW! LINKSVIEW CLOSE * SPRUCE GROVE *Shingles 2024 *HWT 2021 *Kitchen Faucet & Taps 2022 *Maple Cabinets *Separate Coffee Bar *Granite Countertops *Angle-cut Kitchen Island *Gas Fireplace X 2 *Bonus Room *Kids Climbing Wall *Main Floor Office/Den/Flex Room *2nd Floor Laundry *Custom Entry Closet/Maple Bannisters/Niches *In-Floor Heated Basement *Fully Finished Basement w/ Refreshment Bar... *Oversize Double Garage w/ In-Floor Heat & Drain *Triple-Wide Aggregate Driveway *Large Fenced Backyard *Raised Garden Beds *Stones-throw to Park, Walking Trails & Golf Course *Public transit *E-Scooter Community *LINKSVIEW CLOSE in SPRUCE GROVE Don't Blink twice or this beauty will be GONE!

Built in 2004

Essential Information

MLS® #	E4432526
Price	\$699,000
Bedrooms	4
Bathrooms	3.50
Full Baths	3
Half Baths	1
Square Footage	2,400
Acres	0.00



Year Built	2004
Type	Single Family
Sub-Type	Detached Single Family
Style	2 Storey
Status	Active

Community Information

Address	9 Linksvie Close
Area	Spruce Grove
Subdivision	Linkside
City	Spruce Grove
County	ALBERTA
Province	AB
Postal Code	T7X 4P3

Amenities

Amenities	Deck, Detectors Smoke, Gazebo
Parking	Double Garage Attached

Interior

Interior Features	ensuite bathroom
Appliances	Air Conditioning-Central, Dishwasher-Built-In, Fan-Ceiling, Garage Control, Garage Opener, Microwave Hood Fan, Refrigerator, Storage Shed, Vacuum System Attachments, Vacuum Systems, Washer, Window Coverings, See Remarks
Heating	Forced Air-1, Natural Gas
Fireplace	Yes
Fireplaces	Glass Door, Mantel, Tile Surround
Stories	3
Has Basement	Yes
Basement	Full, Finished

Exterior

Exterior	Wood, Brick, Vinyl
Exterior Features	Backs Onto Park/Trees, Cul-De-Sac, Fruit Trees/Shrubs, Golf Nearby, No Back Lane, No Through Road, Playground Nearby, Public Swimming Pool, Public Transportation, Schools, Shopping Nearby
Roof	Asphalt Shingles
Construction	Wood, Brick, Vinyl
Foundation	Concrete Perimeter

Additional Information

Date Listed April 24th, 2025
Days on Market 6
Zoning Zone 91

DATA IS DEEMED RELIABLE BUT IS NOT GUARANTEED ACCURATE BY THE REALTORS® ASSOCIATION OF EDMONTON. COPYRIGHT 2025 BY THE REALTORS® ASSOCIATION OF EDMONTON. ALL RIGHTS RESERVED.Trademarks are owned or controlled by the Canadian Real Estate Association (CREA) and identify real estate professionals who are members of CREA (REALTOR®, REALTORS®) and/or the quality of services they provide (MLS®, Multiple Listing Service®)
Listing information last updated on April 30th, 2025 at 4:32pm MDT