

\$290,000 - 218 10309 107 Street, Edmonton

MLS® #E4432046

\$290,000

1 Bedroom, 1.00 Bathroom, 906 sqft

Condo / Townhouse on 0.00 Acres

Downtown (Edmonton), Edmonton, AB

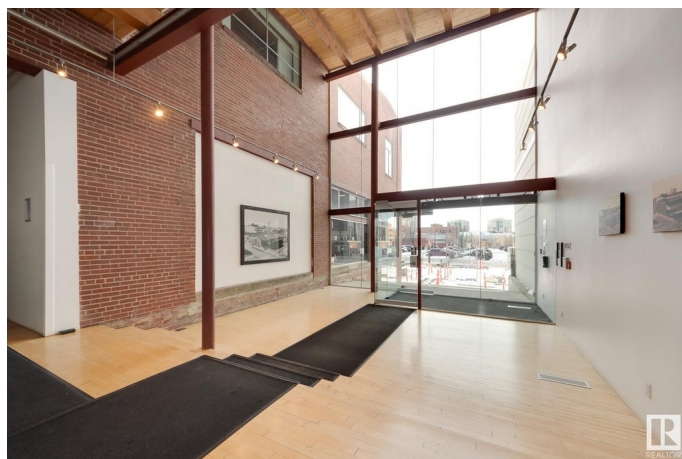
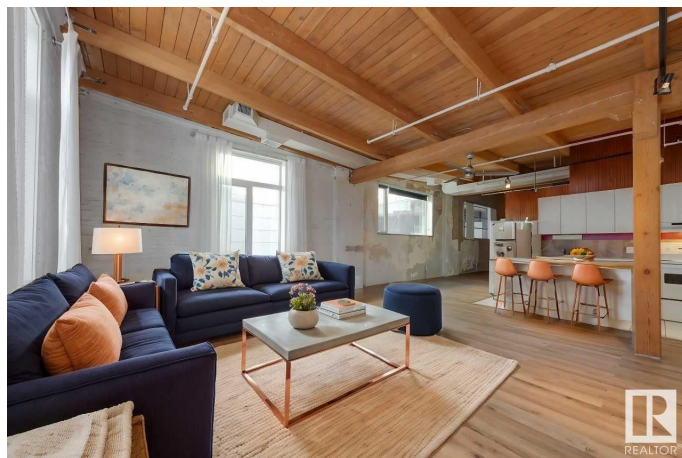
SUNNY TOP-FLOOR END-UNIT with huge windows on two sides - the ultimate, open-concept urban living experience, located directly on the NEW VALLEY LINE LRT! Downtown convenience is yours, with the LRT station soon to be steps from your front door! This unique unit is located right in the Ice District, steps from Grant MacEwan University, minutes from U of A. It features brand new vinyl plank flooring, bright open plan with 12' open beam ceilings & exposed brick walls from 1928 - it must be seen to be appreciated! Never share a machine again - you have a washer & dryer right in your unit. Includes 2 kitchen islands & PAX wardrobe system. Reasonable condo fee covers everything except power. The new LRT line is well underway and will make sure you can get wherever you want to go, quickly! With heated, secure underground parking, you can walk to concerts, restaurants, shopping and markets in minutes!! Short-term rentals allowed with approval. Ideal property for the cosmopolitan single, couple, or investor!

Built in 1928

Essential Information

MLS® # E4432046

Price \$290,000



| | |
|----------------|-------------------|
| Bedrooms | 1 |
| Bathrooms | 1.00 |
| Full Baths | 1 |
| Square Footage | 906 |
| Acres | 0.00 |
| Year Built | 1928 |
| Type | Condo / Townhouse |
| Sub-Type | Lowrise Apartment |
| Style | Loft |
| Status | Active |

Community Information

| | |
|-------------|----------------------|
| Address | 218 10309 107 Street |
| Area | Edmonton |
| Subdivision | Downtown (Edmonton) |
| City | Edmonton |
| County | ALBERTA |
| Province | AB |
| Postal Code | T5J 1K3 |

Amenities

| | |
|----------------|--|
| Amenities | Closet Organizers, Secured Parking, Security Door, Vaulted Ceiling |
| Parking Spaces | 1 |
| Parking | Heated, Underground |

Interior

| | |
|--------------|---|
| Appliances | Dishwasher-Built-In, Dryer, Refrigerator, Stove-Electric, Washer, See Remarks |
| Heating | Fan Coil, Natural Gas |
| # of Stories | 2 |
| Stories | 1 |
| Has Basement | Yes |
| Basement | None, No Basement |

Exterior

| | |
|-------------------|--|
| Exterior | Brick |
| Exterior Features | Public Transportation, Schools, Shopping Nearby, See Remarks |
| Roof | EPDM Membrane |
| Construction | Brick |

Foundation Concrete Perimeter

Additional Information

Date Listed April 22nd, 2025
Days on Market 55
Zoning Zone 12
Condo Fee \$544

DATA IS DEEMED RELIABLE BUT IS NOT GUARANTEED ACCURATE BY THE REALTORS® ASSOCIATION OF EDMONTON. COPYRIGHT 2025 BY THE REALTORS® ASSOCIATION OF EDMONTON. ALL RIGHTS RESERVED.Trademarks are owned or controlled by the Canadian Real Estate Association (CREA) and identify real estate professionals who are members of CREA (REALTOR®, REALTORS®) and/or the quality of services they provide (MLS®, Multiple Listing Service®)
Listing information last updated on June 16th, 2025 at 7:47pm MDT